

Refrigeration Equipment 3-Door Work Top Refrigerator 72" Long

ITEM # _____
MODEL # _____
NAME # _____
SIS # _____
AIA # _____



738302 (KCHUCWT72R)

3-Door Work Top Refrigerator
72" Long

Short Form Specification

Item No.

3-door refrigerator counter top, with worktop, with exterior back panel, exterior bottom panel, and exterior top panel in galvanized steel, exterior side panel in 430 stainless steel; interior back, top and bottom panels in 304 stainless steel. Fin & tube condenser to improve the performances in high temperature environments. Automatic Defrost Cooling System and temperature control. Vinyl heavy duty adjustable, easy to handle and clean shelves. External temperature display.

R290 gas in refrigeration circuit.
ETL Safety and Sanitation certified.
3/5 Years warranty.

Main Features

- External temperature display.
- Removable gasket for easy cleaning operations.
- Fin & Tube Condenser improves performance in high temperature environments.
- Automatic Defrost Cooling System provides worry-free performance.
- Electronic Temperature Control, quick and simple to set, with control display for easy monitoring.
- Heavy duty Vinyl coated steel shelves.
- Cabinet completely insulated with high density polyurethane for low environmental impact.

Construction

- Self-closing door with 90-degree stay-open feature.
- Heavy duty casters.
- Pre-wired heavy duty power cord.
- Heavy duty door hinges.
- Magnetic gasket removable without tools for easy cleaning.

Sustainability

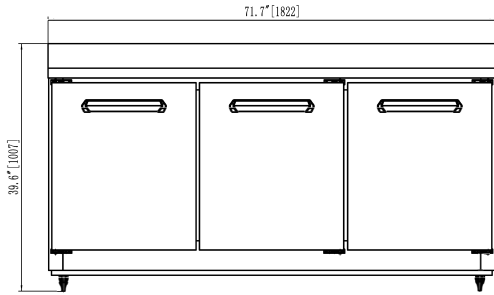
- High efficiency components to minimize the energy consumption still guaranteeing the highest performances.
- CFC and HCFC free, highly ecological refrigerant type: R290 (ecological gas in foam: cyclopentane). Hydrocarbon refrigerant gas R290 for the lowest environmental impact (GWP=3), to reduce green house and ozone depletion effects.
- Hydrocarbon refrigerant gas R290 for the lowest environmental impact (GWP=3) - CFC and HCFC free.

Optional Accessories

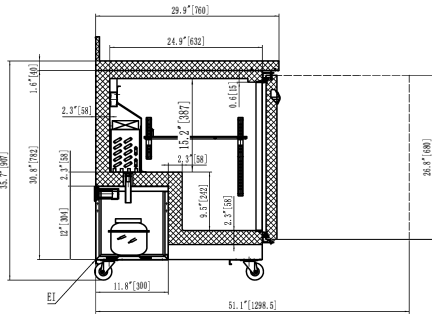
- 1 ADJUSTABLE FOOT PNC 206445 ☐
- Drawer Kit for 48" Mega Top, Salad Top, Undercounter and L/ R section of 70" Salad & Mega Top and 72" Undercounter PNC 880616 ☐

APPROVAL: _____

Front

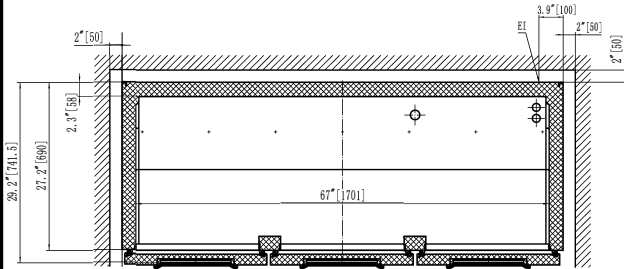


Side



El = Electrical connection

Top



Electric

Supply voltage:	115 V/1 ph/60 Hz
Electrical power, max:	0.36 kW
Plug type:	USA NEMA 5-15P

Capacity:

Number and type of grids (included):	3 - 538x425/580x425
Gross capacity:	18 cu.feet

Key Information:

Warranty:	3 / 5 years
Door hinges:	1 Left+2 Right
Capacity:	17.9999 cu.ft.
External dimensions, Width:	71 3/4" (1822 mm)
External dimensions, Depth:	29 15/16" (760 mm)
External dimensions, Height:	39 5/8" (1007 mm)
Number and type of doors:	3 Full
Internal Dimensions (depth):	24 13/16" / (630 mm)
Internal Dimensions (height):	24 7/16" / (620 mm)
Internal Dimensions (width):	66 15/16" / (1700 mm)
Shipping height:	42 1/8" (1070 mm)
Shipping weight:	357 lbs (162 kg)
Shipping volume:	56.28 ft ³ (1.59 m ³)
Type of external material:	Stainless Steel
Type of internal material:	Polystyrene
Approvals	ETL C&US;ETL SANITATION

Refrigeration Data

Current absorbed:	738302 (KCHUCWT72R)	3.5 Amps
Condenser type:		Fin & tube
Operating temperature min.:		32 °F
Compressor power:		1/5 hp
Operating temperature max.:		41 °F
Defrost type:		Auto Defrost

Sustainability

Refrigerant type:	R290
GWP Index:	3
Refrigerant weight:	130 g